



# Eddie Bauer® Shirt Jac. EB502



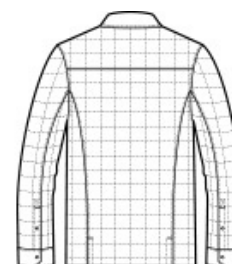
Midweight jacket warmth meets collared shirt style in this shirt jac that blurs the line between the great outdoors and indoors. Snap-front closure and snap cuffs. Drop-in left chest pocket. Contrast Eddie Bauer heat transfer logo on the right hem. Made of 100% polyester fabric and 1.8-ounce, 100% polyester fill. Water-resistant with a PU coating.

### CARE INSTRUCTIONS

Machine Wash Cold, Inside Out With Like Colors, Do Not Use Fabric Softener, Only Non-Chlorine Bleach When Needed, Tumble Dry Low, Do Not Iron, Do Not Dry Clean.

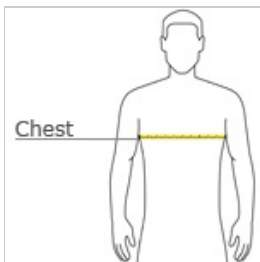


front



back

### HOW TO MEASURE



**CHEST**  
Measure under the arm and around the fullest part of the chest with arms down, keeping tape horizontal.

### SIZE CHART

	XS	S	M	L	XL	2XL	3XL	4XL
Chest	32-34	35-37	38-40	41-43	44-46	48-50	52-54	55-57

### COLOR INFORMATION



Black  
PMS NTR BLACK  
C



Charcoal Grey  
Heather  
PMS 7540C